

S  
&T

# OUTLINES

WINTER 2008

STEPHENSON  
&TURNERARC  
HITECTSENGI  
NEERSCREATI  
NGINSPIRATI  
ONALENVIRO  
NMENTS

# Awards for our work



Client: Department of Corrections Springhill: Whare Hui Interior - Architecture and Interior Design by Stephenson&Turner

A major Stephenson&Turner project for 2007 has won three awards in the NZIA (New Zealand Institute of Architects) Resene Local Awards for Architecture.

Judges applauded the design quality of the Department of Corrections' Spring Hill Corrections Facility, and also announced individual awards for the Facility's two cultural buildings: the Whare Hui and the Pacific peoples' Fale, which will form the backbone of the Facility's Pacific Focus Unit.

## Exceeding client expectations

Spring Hill is the latest and largest of the four new prisons built as part of the Department's Regional Prisons Development Project.

Primarily catering for prisoners from South Auckland, Waikato and Bay of Plenty, it's in Tainui heartland – a key location given its aim of locating prisoners close to their families and communities, which has been identified as an important factor in rehabilitation and reintegration.

S&T's role involved managing and co-ordinating the consultant design team, which included Connell Wagner (civil and structural engineering), Cox Australia (security design) and Boffa Miskell (landscaping). S&T also provided building services at the Facility and worked very closely with local iwi and hapu. As kaitiaki (or guardians) of the site, they were actively involved in all design, development and construction processes.

At its peak, the workforce on site numbered 970, and more than 2.5 million man-hours went into the project.

The 21-hectare campus features accommodation to the east and other amenities to the west, with a sports field providing the central focus. It also includes teaching and visiting facilities, as well as the Whare Hui and Fale to the north. Within its highly secure perimeter, inmates have freedom of movement commensurate with their assessed security risks, while non-custodial facilities such as offices and visitor arrival areas are located outside the perimeter fence.

The buildings have been designed with a 'rural' flavour, with features such as gables, eaves and sheds and four earth-related colour-ways for wall and roof cladding: red for accommodation within the perimeter; green for accommodation outside; grey for community and cultural facilities; and brown for administration.

In contrast to traditional practice, the project was conducted as a Collaborative Working Arrangement involving the main participants: the Department of Corrections, S&T, Mainzeal and Works Infrastructure. This enabled 'fast-track' construction methods and the hand-over of a defect-free, on-time facility to the Department of Corrections.

Our thanks also go to the other 26 companies that worked as a superb team with the principal participants.

# Auckland Airport project takes off



The first major phase of the long-term development of Auckland Airport has recently been opened. Called the '3A Expanded Arrivals project', it provides the framework for the future development of the international terminal building.

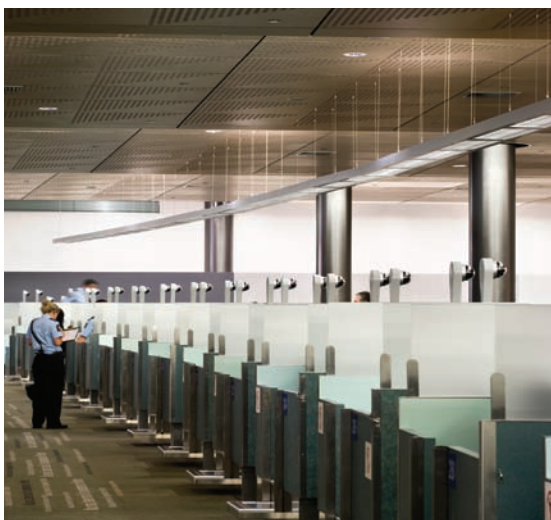
A product of a five-year process of planning and development, this project provides a major capacity increase for the immediate future and paves the way for longer-term business growth. It includes a new and larger arrivals border processing hall and duty-free shopping, and acts as the hub linking the existing Pier A and terminal building with the currently under-construction Pier B – an eventual 12-gate facility capable of serving the new-generation Airbus A380 aircraft.

The interiors have been developed in collaboration with Adrian Nancekivell Design to reflect the airport company's brand 'Representing New Zealand'. While meeting the airport's primary functional requirements, the design also focuses on

New Zealand's natural environment, with contemporary references to the ocean, foreshore and forest landscapes illustrating a pictorial journey of settlers and visitors alike.

Perforated tukutuku-patterned timber plywood ceiling elements combine with floor and wall patterns to lead passengers towards immigration processing, where the ceremony of greeting is represented in the carpet pattern through the tāniko, a traditional Maori ceremonial welcome mat.

**Dominic Plume, S&T's lead architectural interiors designer says, "The introduction of key interior finishes has not only helped simplify, but also rationalise the complexities of the airport's numerous functions, both in terms of way-finding and that of being a unique New Zealand experience."**



Client: Auckland Airport - 3A Expanded Arrivals - Architecture and Interior Design by Stephenson&Turner

# Refurbished office space for Defence Force

Stephenson&Turner has recently refurbished a 5,000 square-metre factory administration building for the New Zealand Defence Force.

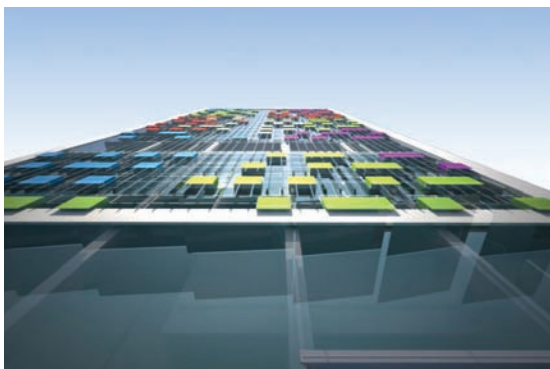
Located close to Trentham Military Camp in Upper Hutt, the two-storey, 50-year-old building provides office space for about 200 people.

This extensive renovation project has complemented the building's early modernist design, restoring original features such as a staircase while installing 21st-century facilities – including air conditioning, leading-edge technology and a sophisticated security system. A colourful interior and clever use of old and new furniture complete the transformation, ensuring this solidly built structure will continue as an effective, efficient workplace well into the future.



*Client: New Zealand Defence Force  
Architecture, Interior Design and Building Engineering Services  
by Stephenson&Turner*

# The new black in capital accommodation



Visiting Wellington on business or looking for temporary inner-city accommodation? A new hotel/apartment complex currently under development could be just the thing for you! Centrally located in Victoria Street, the tall, slender, 260-apartment, 21-storey Columbard@ Wellington will maximise the use of space in offering "somewhere to 'crash' at night".

Totally self-contained, each apartment will include a fully equipped kitchenette, bathroom, laundry, direct-dial phone, TV, Sky, DVD player, stereo, computer desk, fast internet connection and balcony, all within arm's reach. The complex will also have a ground-floor café (opening on to the adjacent Denton Park) and space for two retail stores.

As you can see from the images, the building fits neatly into its narrow, challenging site and makes a refreshingly colourful statement for the CBD. To be built in a combination of concrete, timber and glass, it features multi-coloured balconies that will be specially arranged by a Wellington artist. It's also designed to capture maximum natural light and, in keeping with Stephenson&Turner's sustainable design principles, features a solar heating system on its northern face.

Planned for completion in 2009, the Columbard@ Wellington could well become THE place to stay!

*Client: Columbard®  
Architecture and Building Engineering  
Services by Stephenson&Turner*

# S&T at the forefront of sustainable design

As an integrated practice of architects and building services engineers, Stephenson&Turner has welcomed increased opportunities in producing outstanding examples of environmentally sustainable design (ESD).

A comprehensive professional development programme ensures we stay at the forefront of ESD issues, trends and developments – and we're rapidly acquiring ESD project experience through our work with a variety of clients, projects and design teams.

**"Integrated design at last has the highest priority," says Fadia Sami, S&T Associate Director and energy modelling/acoustics specialist. "I'm enjoying undertaking energy analysis by computer modelling – a process that enables both clients and the design team to consider options and make commercially astute decisions that also meet Green Star energy targets."**

Our services include:

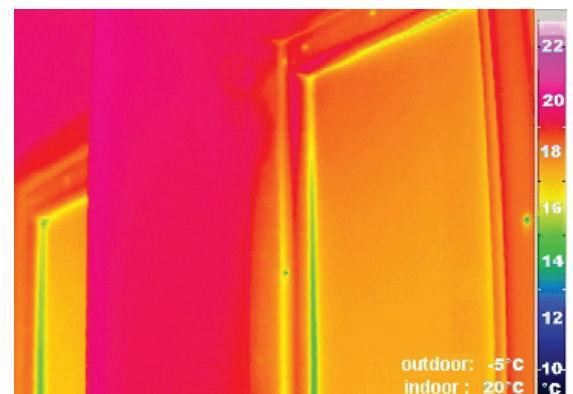
- ESD consultancy (NZGBC professionally accredited)
- architectural services covering land use and ecology assessments, transport calculations and materials advice
- building services, including heating, ventilation and air conditioning (HVAC) system design, indoor environment quality (IEQ) analysis, thermal comfort (PMV) analysis, energy use and off-axis scenario analysis by computer modelling, power and lighting design, artificial lighting level monitoring, daylight penetration modelling, and water use efficiency and emissions analysis. We can also act as commissioning agent for our clients and provide guidance for building users
- environmental acoustics, building acoustics and noise control.

## ZERO.PLUS - zero emission and high quality living!

S&T is currently participating as a consultant to the University of Auckland's School of Architecture project zero.plus Design and Realisation of New Zealand's First 0 Emission House. This ground-breaking project aims to initially develop a house and eventually a neighbourhood, to meet international passive house standards as defined by the 'Passivhaus Institute' (Darmstadt, Germany).

S&T is involved in the design and construction of this inaugural Zero Emission House as a prototype unit. This house will be used as a model to develop a sustainable urban settlement, located in the Auckland region. Similar projects have been successfully completed in Europe, and the New Zealand-based research and prototype construction will commence in late 2008 and is targeted for completion early 2010.

S&T is also participating as teaching support in sustainable design, acoustics, lighting and energy for the "Environmental Design II" Archtech307 Course offered by the School of Architecture.



## S&T wins design gold

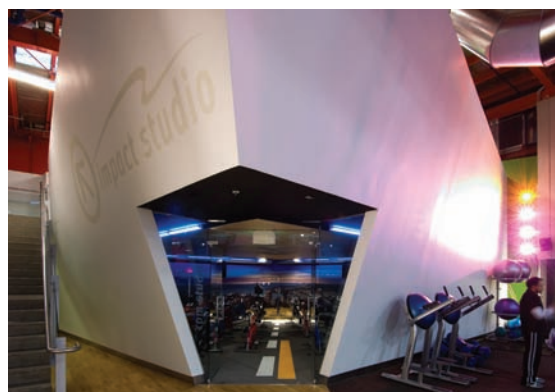
Stephenson&Turner has won gold at a glamorous event widely considered the Oscars of New Zealand design – the 2007 BeST Awards.

The award was presented by the Designers Institute of New Zealand for S&T's design of Les Mills Hutt City. In announcing the winner in the Spatial: Offices and Workplace Environments category, the judges praised the design as a "bold solution breathing new life into an existing building and promoting environmentally sustainable design best practice".

Ross Brown, S&T's lead architect on the project, says, "The amorphous and undifferentiated warehouse space required a brave, innovative approach to deliver the client's brief to 'excite, amaze and inspire like never before'."

Reece Zontag, Les Mills New Zealand's Chief Executive, has described the new facility as 'undoubtedly one of the best fitness centres in the world'.

**"We're delighted to have exceeded our client's expectations," says Ross, "and very pleased to have garnered international recognition with this prestigious award."**



Client: Les Mills Hutt City  
Architecture, Interior Design and Building Engineering Services  
by Stephenson&Turner

## And one for our team



Stephenson & Turner is also a winner on lighting!

Lighting designers Glen Wright and Michael Warwick were presented with a Commended Lighting Design Award at the recent IES National Lighting Awards – for the design of the new Group Fitness Studio at Les Mills Hutt City.

The lighting reflects the Les Mills brand: creativity, inspiration, energy and passion; and a drive to stand up, stand out and have a real sense of difference. Its brief to S&T? To 'deliver a customer experience that's uniquely Les Mills' and 'change the way the world thinks about fitness'. A big ask, but an exciting one!

The Group Fitness Studio's lighting fuses architecture and theatre. It creates a space that constantly changes, with colour, movement and intensities that reflect and reinforce the Les Mills brand and the classes the Studio offers. Ready for an intensive Body Attack? Check out the cool colours that complement the energy – or try the Body Balance blend of yoga, Pilates and tai chi and surround yourself with warmer colours and subtle effects.

This fantastic experience has been achieved with a clever use of controls, colour mixing and programmable moving lights. It's the result of a great deal of teamwork – between Les Mills, S&T architects and the lighting designers. Yes, you may have to take a Les Mills class to get a close-up look – but it will be well worth the effort!

# In-house promotions



Auckland Associate Directors & Associates Team

Stephenson&Turner's Directors are delighted to announce the following additional Associate Director appointments:

**Associate Director Appointments:**

George Czerniak	Dominic Plume
Bernd Gundermann	Jeremy Quiding
Manuel Diaz	Vitali Prylepski
Rose Minnee	Pierre van Tonder

**"These key staff appointments will complement and enhance our existing structure," says S&T's Chairman, Ken Stanton. "They recognise and applaud the contribution these eight people are making to the success of our business."**

S&T's management structure now also includes a second-tier Associate level.

**"This is our way of offering appropriate professional development opportunities to 'high-potential' performers," says Ken. "It's an approach that's been enthusiastically received by everyone on the team, as it reinforces our commitment to them and the future direction of the practice."**

**Associate Appointments:**

Patricia Han  
Tymen Tolsma  
Henry Mullaly

# S&T appointment to fire safety position



Michael Dixon

Stephenson&Turner's fire engineering specialist, Michael Dixon, has been appointed President of the New Zealand chapter of the Society of Fire Protection Engineers (SFPE), a position he will hold until 2010.

The SFPE is based in the United States with chapters throughout the US, Europe, Japan and Australasia. In New Zealand it's also a technical group of IPENZ (Engineers New Zealand), so provides advice and comment on fire engineering matters to the wider community.

During his two-year tenure, Michael will represent the interests of practising fire engineers and their clients on advisory committees to the Department of Building and Housing, Standards New Zealand and other organisations.



## SERVICES PROVIDED

Architecture

Interior design

Urban design and site development planning

Engineering

Heating, ventilation and air conditioning

Electrical systems

Plumbing and drainage

Fire engineering

Acoustic engineering

Communications and information technology

Lift and escalator systems

Security systems

Facility planning

Facilities management

Feasibility and space utilisation studies

Building surveys and due diligence reports

Plant and energy audits

**STEPHENSON  
& TURNER**  
ARCHITECTS  
ENGINEERS

[WWW.STEPHENSON  
TURNER.COM](http://WWW.STEPHENSONTURNER.COM)

### AUCKLAND OFFICE:

152 FANSHAWE  
STREET LEVEL 2  
PO BOX 1830  
AUCKLAND 1140  
NEW ZEALAND  
T: 649 3031249  
F: 649 3032554  
E: AUCKLAND@  
STEPHENSON  
TURNER.COM

### WELLINGTON OFFICE:

RADIONZ HOUSE  
155 THE TERRACE  
LEVEL 1  
PO BOX 10145  
WELLINGTON 6143  
NEW ZEALAND  
T: 644 4727899  
F: 644 4731111  
E: WELLINGTON@  
STEPHENSON  
TURNER.COM

### ARGEST TECHNICAL SERVICES LIMITED

#### AUCKLAND OFFICE:

PO BOX 1830  
AUCKLAND 1140  
T: 649 3099419  
F: 349 3032554  
E: AK@ARGEST.  
CO.NZ

**FREEPHONE:**  
0800 274 378

[WWW.ARGEST.CO.NZ](http://WWW.ARGEST.CO.NZ)

#### CHRISTCHURCH OFFICE:

315 MANCHESTER  
STREET LEVEL 4  
PO BOX 13324  
CHRISTCHURCH 8141  
T: 643 3773757  
F: 643 3663769  
E: CH@ARGEST.  
CO.NZ

#### WELLINGTON OFFICE:

PO BOX 10145  
WELLINGTON 6143  
T: 644 4727905  
F: 644 4731111  
E: WN@ARGEST.  
CO.NZ

### SAFETYFIRST NZ LIMITED

#### AUCKLAND OFFICE:

PO BOX 1830  
AUCKLAND 1140  
T: 649 3776500  
F: 649 3776501  
E: INFO@SAFETY  
FIRST.CO.NZ

#### WELLINGTON OFFICE:

PO BOX 5666  
WELLINGTON 6145  
T: 644 3846890  
F: 644 3849608  
E: RECEPTION@  
SAFETYFIRST.CO.NZ

### ASSOCIATED OFFICES:

STEPHENSON  
& TURNER  
66 DUDLEY STREET  
WESTMELBOURNE  
VIC 3003

STEPHENSON  
& TURNER  
INTERNATIONAL  
LEVEL 7  
80 ARTHUR STREET  
NORTH SYDNEY  
NSW 2060

**S  
&T**